

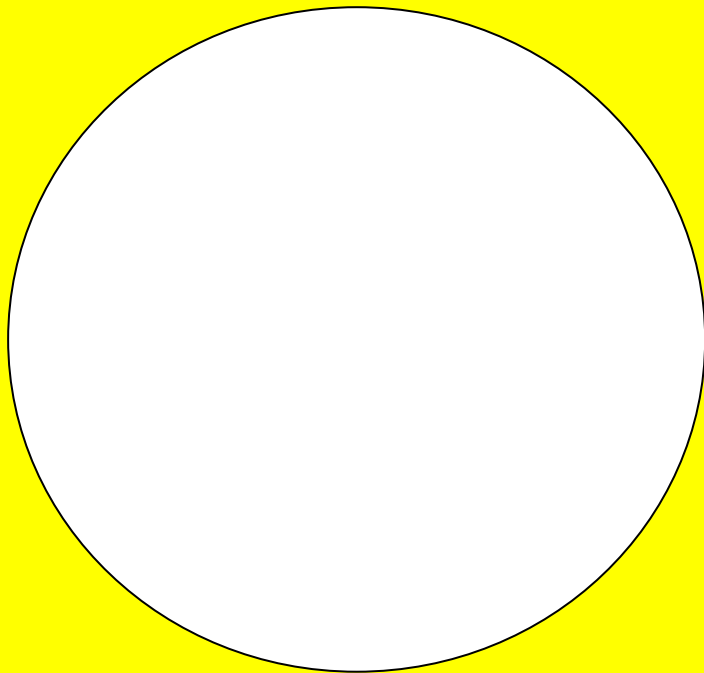
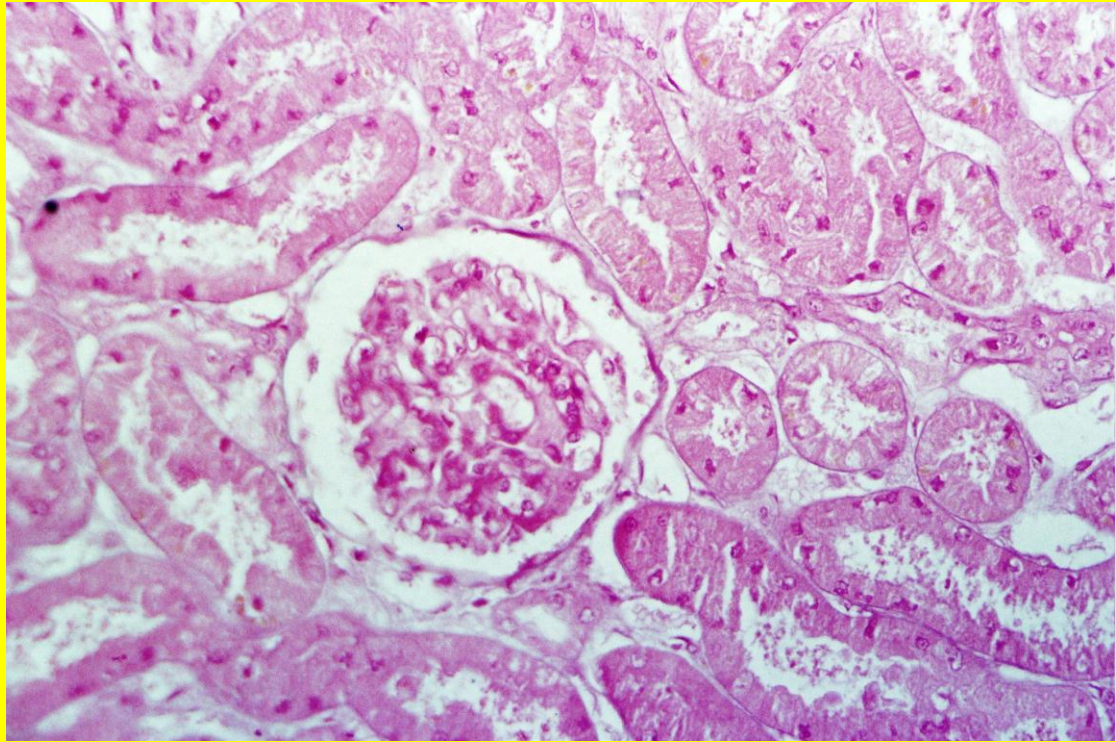
Organ: Kidney

Stain: H & E

Lesion: Cloudy swelling

Microscopical findings:

1. The changes are developed mainly in the proximal and distal renal tubules and ascending loop of henel.
2. The lining epithelium are swollen and taken triangular shape and the lumen become narrow and taken star shape.
3. The cytoplasm showing eosinophilic granules and the nucleus in the same situation.
4. The intertubular blood capillaries nearly devoid from erythrocyte and when erythrocytes present it intact.



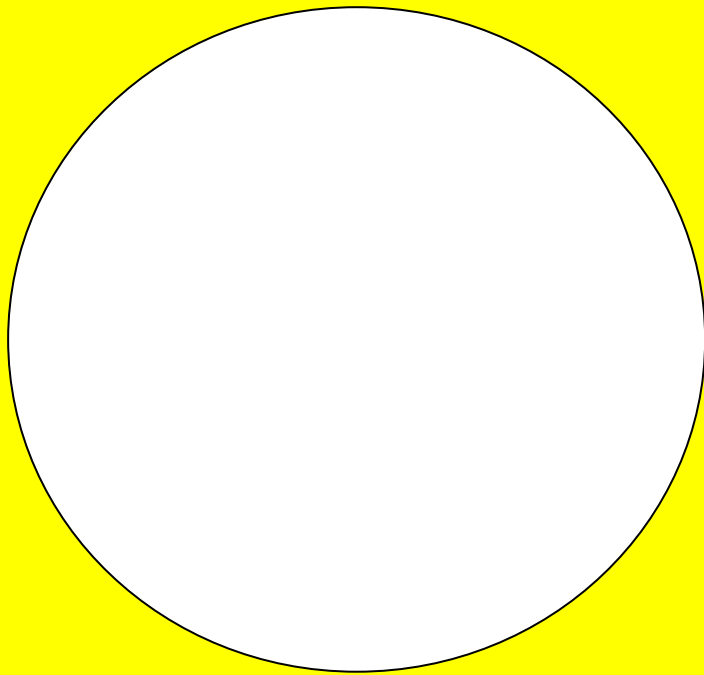
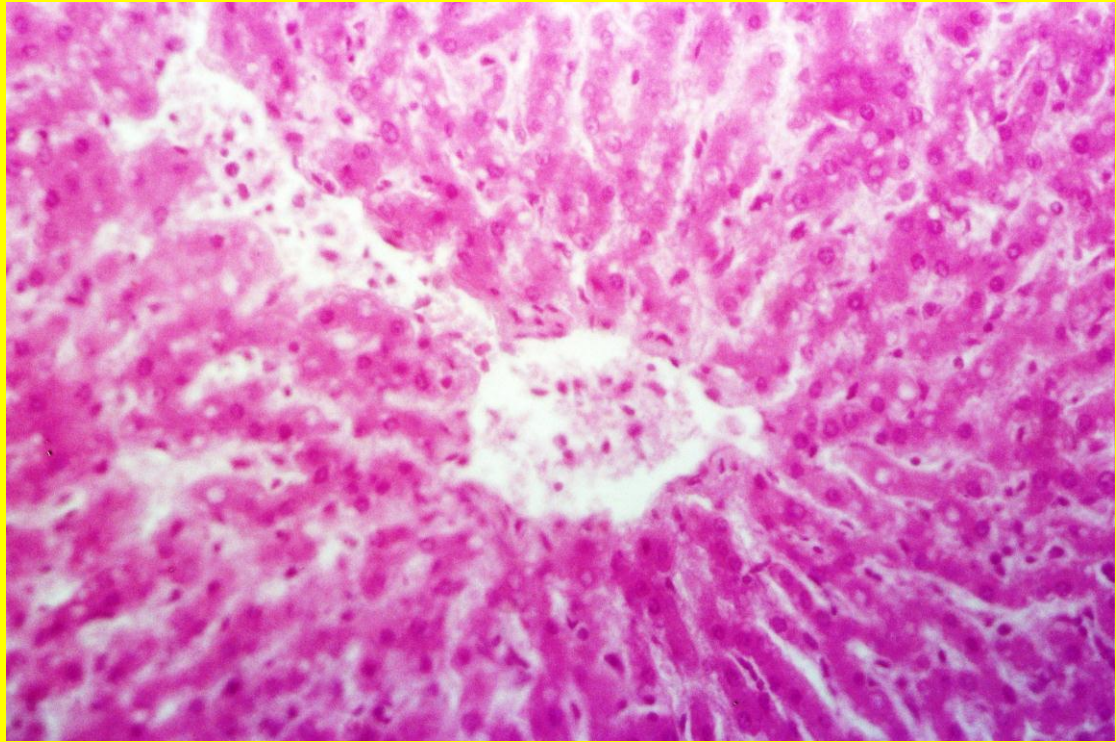
Organ: Liver

Stain: H & E

Lesion: Vacuolar degeneration

Microscopical findings:

1. The affected hepatic cells showing presence of small sized faint eosinophilic intracytoplasmic vacuoles.
2. These vacuoles are varies in size with hazy borders.
3. The nuclei in the same size and situation.
4. The vacuole present in the cytoplasm of hepatocytes may be present single or multiple.



Organ: Liver

Stain: H & E

Lesion: Hydropic degeneration

Microscopical findings:

1. The hepatic cells are swollen and showing pale and basically clear spaces in the cytoplasm.
2. The cytoplasm showing the presence of eosinophilic threads which taken net shape.
3. The nuclei appeared normal in size and situation.

